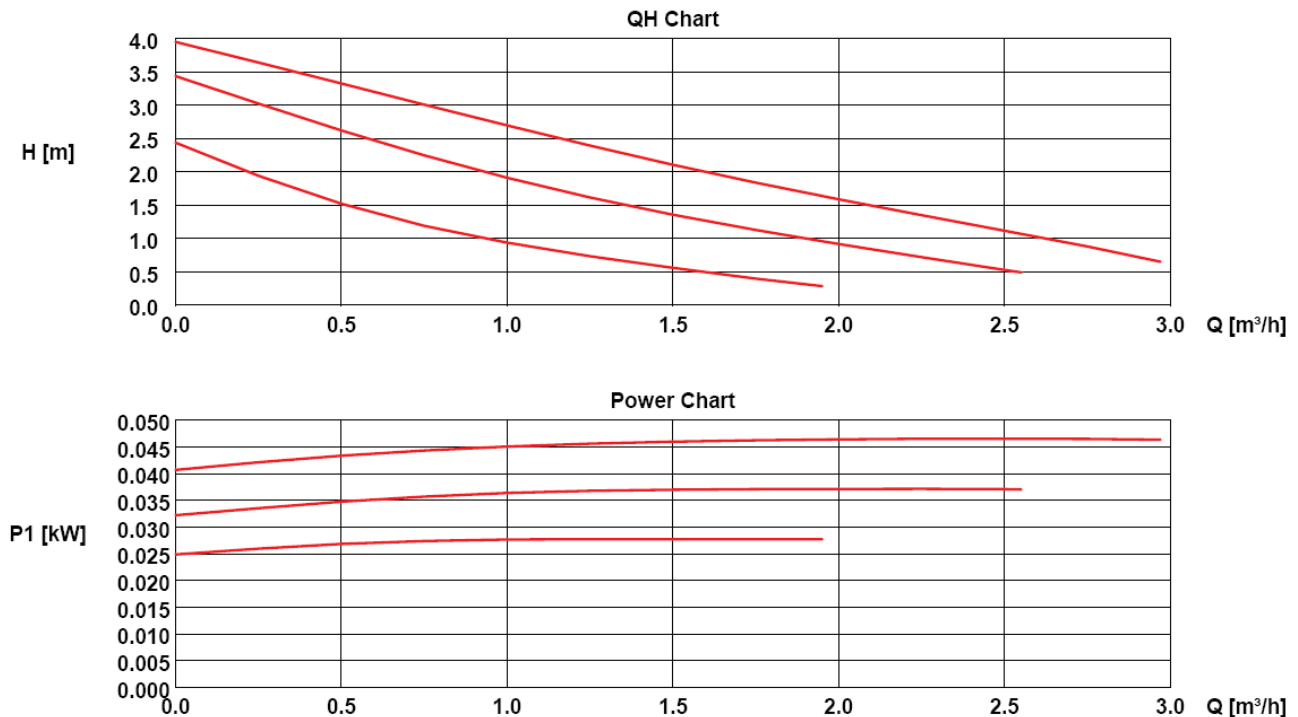


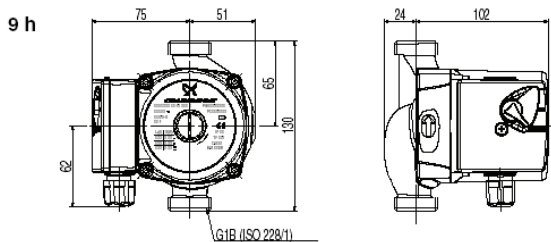
Low Energy

Circulator Pump UPSO 25 - 40 130 mm 1 x 230 V, 50 Hz

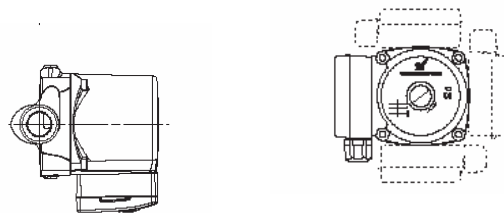
Performance Curve



Dimensional drawings



Position of Terminal Box



Electrical Data 1 x 230 V

Speed	P ₁ [W]	I _{1/1} [A]
3		
2		
1		

Performance at 1 m³/h

Speed	P ₁ [W]	H [m]
3		
2		
1		

Motor Protection

Impedance protected, Short circuit proof
No external motor protection required

Enclosure Class

IP 44

Approvals



Liquid Temperature

+2°C to + 110°C

Insulation Class

H

Temperature Class

TF 110

System Pressure

Max. 10 bar

Standard Connections

Inlet G1 ½ x Rp 1 unions
Outlet G1 ½ x Rp 1 unions

Housing Material

Cast iron EN-GJL-150-200
DIN W. Nr. 0.6020

Net Weight

2,4 kg

Units per Pallet

192